

Thursday, October 6, 2022 via Google Meet; 9:30am – 11am

Present: Sivan Chapman, Eileen Henke, Crissy Dickey, Michelle Bilotti, Shanna Maier , Neha Bajaj

Excused: Erin Debrich & Ann Heaney

## Minutes

### 1. Recap of Information: Meeting on 10/4/22 with Dr. Sinha & Ms. Villez

- The main takeaway was that SEPTA needs to be more in charge of events such as the Primary school Play Date. Even though the idea and planning process started in the summer, the district procrastinated and then quickly threw it back to SEPTA to run and organize at the last minute. We will need to be more in control of this event next year, since it is most families first introduction to our district and to SEPTA. The next event that we will be a part of is the CPSE – CSE transition meeting for incoming families. It is scheduled for January with PPS. SEPTA would like to hold a coffee talk after that meeting to meet with families, answer their questions and be a source of support for them during this very nerve-wracking time.
- [Sivan will reach out to PPS to get clarity on the OG training vs. certification of teachers.](#)
- (See minutes from the 10/4 meeting for more information about the rest of that meeting)

### 2. Holiday Party Details - Total Number of Guests who have already purchased admission, Decor, Raffles/Baskets?

- Our Holiday Party will take place on Thursday, December 8<sup>th</sup> at Calogero's in GC (7-10pm). We currently have 30 attendees registered. Deposit of \$200 has been paid, balance will be due a few days before with an accurate headcount. (Room has a 60-person minimum for room. We are hoping to get 80 in attendance.)
- [Sivan and Crissy will create a tight to-do list along with a Sign-up Genius in order to get volunteers to help with décor and with the selling of the raffle tickets that night.](#)
- Ideally, we would like to use Shanna's ski house rental as a grand raffle prize and create 5-6 baskets with prize items (restaurant and store gift cards, etc.) Neha has offered to donate a cycle bar gift basket.
- Michelle suggested having a donation basket. Neha thought we could add our tax ID # and a reminder to donate now as a tax-deductible donation for the end of the year.
- The idea of hiring a photographer to take pictures (with some fun holiday props) was also discussed.

### 3. Orange Unity Day shirts via Spectrum Designs - volunteers to organize and deliver shirts

- SquadLocker was unable to ship in the time frame that was originally promised. We have ordered 27 shirts from Spectrum Designs. **Check needed for \$335.09**
- [Ann has volunteered to pick them up in Port Washington on 10/14.](#)
- Once in hand, we can arrange drop off to the 10 families (19 shirts) that have been ordered.
- Sivan has offered to sell the leftover 8 shirts.
- For our next t-shirt event, Sivan proposed ordering in bulk (perhaps using a google form so we can get close to an accurate count) and try to sell for a higher profit.

#### 4. November Nighttime GMM - raffle for concert? Guest speaker "Tackling Eating Issues: Taking Stress Out of Meal Time"

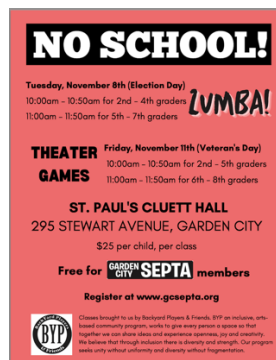
- Our next General Membership meeting is November 9th at 7pm.
- The group felt it would be more well attended virtually rather than in-person
- Guest speakers: Jordan Freeman & Allison Schear (both lead BCBA's from Helping Hands Family) 917-862-7749
- [Presidents – to check with Primary directors about the concert seat raffle.](#)
- Since the meeting will be virtual, we can take RSVPs asking for their building information and conduct the raffle at the end of the meeting virtually (maybe encouraging people to stay until the end to win?)
- Sivan asked that the speakers also speak a tiny bit about eating disorders.

#### 5. Any unfinished/unaddressed business

- 10/11 AAC "Wear your words day".
- Sivan has shared the below info with Locust and Stewart director (those buildings have students with AAC devices)



- Keep spreading the word on these events
- Crissy will ask directors to send to with appropriate links to their principals



- **Check for \$1500 needed**
- Sivan discussed the roles of Guidance counselors at the MS. There seems to be a lack of support from them especially for our special needs students.

- Ideas for at least two mental health check-ins for our MS students was discussed. Should this be the role of guidance, psychologists or social worker?
- Michelle suggested that it may be different for special needs students since they may have a special ed teacher that they feel most comfortable with and that would most likely be the person they would go to for assistance.
- Presidents to discuss more with MS directors and see if more clarity around the guidance position could be discussed as well as more assistance given to support mental health in our MS students.
- It was also discussed that the MS club description list should be made more available to parents ahead of time. Many parents need to prompt their students to advocate and join and without knowing about the clubs (dates, descriptions, etc.) in advance it is hard to help them. Perhaps this is where our guidance counselors can assist our SE kids – they can help them choose a club to join?